



LEHIGH ACRES DOWN-TOWN COMMERCIAL CENTER

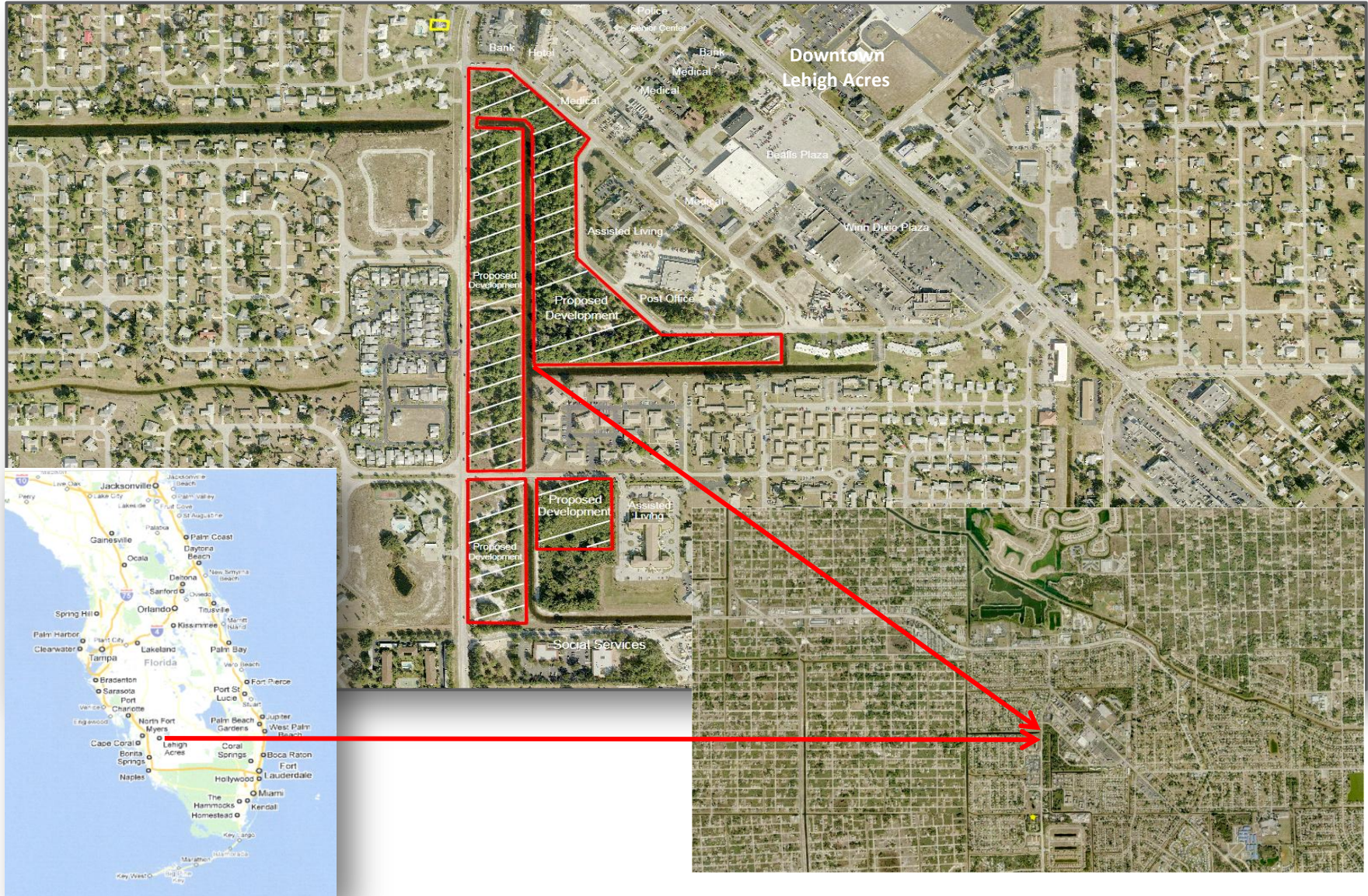
PROPOSED DEVELOPMENT INCLUDES

- **TOTAL LOT SIZE 27 ACRES**
- **TOTAL OF 12 BUILDINGS**
- **276,000 SQUARE FEET OF OFFICES**
- **207,000 SQUARE FEET OF MEDICAL CLINICS**
- **SPACE FOR A FIRE STATION**
- **MINI STORAGE**
- **SIDEWALKS**
- **BRIDGES**
- **BUS STOP**
- **PARKING SPACES**

ADJACENT TO POST OFFICE, ASSISTANT LIVING, MEDICAL OFFICES, HOTEL, SHOPPING, CONDOMINIUMS. QUICK ACCESS TO I-75, SOUTHWEST FLORIDA INTERNATIONAL AIRPORT AND FORT MYERS. SIZE: 9.9 ACRES NEXT TO THE POST OFFICE AND ASSISTANT LIVING FACILITY. 8.31 ACRES ON BETH STACEY BLVD. 3.71 ACRES ON WOODWARD COURT. 3.62 ACRES ON BETH STACEY BLVD. UTILITIES: CENTRAL WATER AND SEWER, ELECTRIC, TELEPHONE.



LEHIGH ACRES DOWN-TOWN COMMERCIAL CENTER





LEHIGH ACRES DOWN-TOWN COMMERCIAL CENTER

